

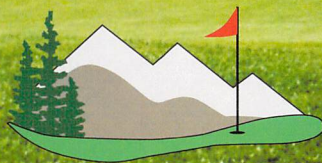
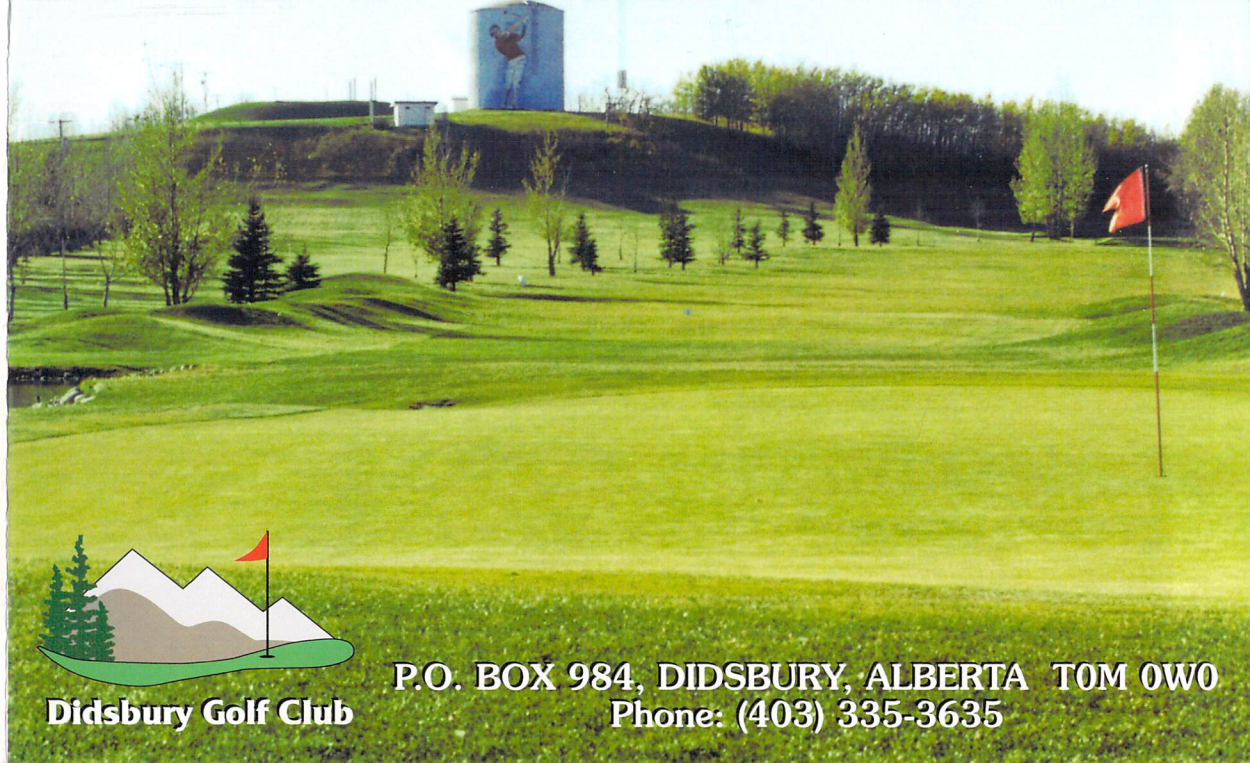
ETIQUETTE

1. No one should stand close to, directly behind move or talk, when a player is making a stroke.
2. On the putting green, no one should stand beyond the hole in the line of the player's stroke.
3. No player should play from the tee until the golfers in front are out of range, nor play up to the green until the golfers have holed out and moved away.
4. A player should replace all divots and ball marks made by himself and see his companions do the same.
5. Players searching for lost balls have a maximum of five minutes to do so and should allow the following matches to play through.
6. Slow players should allow faster players to play through, having signaled for players to pass through. Do not continue to play until these players have passed and are out of reach.
7. Golf is a four hour game and we would appreciate all players playing **ready golf**.

10	11	12	13	14	15	16	17	18	IN	OUT	TOT	HCP	NET
318	297	269	347	361	324	347	193	360	2816	2816	5632		
14 12	16 14	18 18	12 4	8 8	6 10	2 2	10 16	4 6					
4	4	4	4	4	4	4	3	4	35	35	70		
318	287	269	347	339	324	347	162	327	2720	2720	5440		

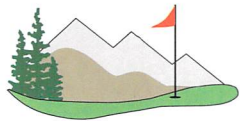
The Golf Club is NOT responsible for ANY LOSS or ANY INJURY within the confines of the golf course.
PLEASE REPLACE DIVOTS • PLEASE REPAIR BALL MARKS ON GREENS

DolicoGolf.com 1 800-267-2751



Didsbury Golf Club

P.O. BOX 984, DIDSBURY, ALBERTA TOM OWO
Phone: (403) 335-3635

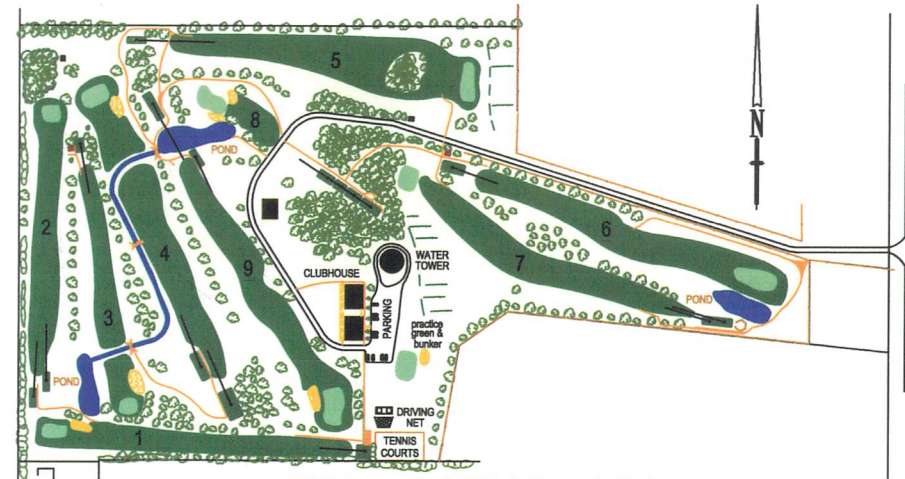


Didsbury Golf Club

COURSE RATING

White Men - 67.1 Slope - 115 Ladies - 71.9 Slope - 133
 Red Men - 66.0 Slope - 113 Ladies - 70.8 Slope - 128

HOLE	1	2	3	4	5	6	7	8	9	OUT
WHITE TEE	318	297	269	347	361	324	347	193	360	2816
HANDICAP	13 / 11	15 / 13	17 / 17	11 / 3	7 / 7	5 / 9	1 / 1	9 / 15	3 / 5	
PAR	4	4	4	4	4	4	4	3	4	35
RED TEE	318	287	269	347	339	324	347	162	327	2720



Didsbury Golf Club Local Rules

1. No group larger than foursome has playing privileges on the golf course.
2. All out-of-bounds are marked with white stakes & boundary fences.
3. Free drop from tagged trees, benches, sprinklers, so as not to interfere with stance or swing.
4. All golfers must start on #1 tee box.
5. Drop areas will be marked pertaining to balls coming to rest too near to screens to be played.
6. All water hazards are lateral.
7. Winter rules in effect.
8. Golf carts stay on paths where provided, to stay behind lines and off of mounds.
9. Dress code in effect.
10. R.C.G.A. rules apply.

DATE: _____ PLAYER: _____ ATTEST: _____